



# DPROCloud

## PRICE LIST

*Note: All pricing in US Dollars*

*Effective: May 1, 2022*

We have lots of long-term **Data Pro Accounting Software** customers who have a wide range of **Infinity POWER** accounting and **Infinity COMMERCE** e-commerce modules that are better off being managed and hosted by us. If you have a good "local administrator" or solid "IT Firm" who understands network security, IIS Servers, e-mail configurations and more, then keep what you have.

If not, then there is the **DPROCloud!** You get your own "dedicated private cloud server" where only you are hosted on your own "special dedicated server." No other companies, or users, are shared on the same server. That's because Data Pro's **Infinity POWER** and **Infinity COMMERCE** modules have too many features that require their own dedicated "Windows processes" and can't be shared on the same server with another company.

It doesn't matter how many accounting modules or **Infinity COMMERCE** modules you have licensed, you can have them all on your own dedicated **Cloud Server**. You can always add or delete more software licenses and/or users at any time. Further, **Technical Support** takes on a whole new level of simplicity when our staff can get right on to your server and assist you with any issues or questions you may be having. It's never been easier to take great care of our customers!

**Dedicated DPROCLOUD Server:** **\$150** per month, per server billed on the first of each month.

**Each Windows User:** **\$21** per month, per user, billed on the first day of each month. You can add or remove users at any time!

**INTERNET ACCESS is REQUIRED!** There is a one-time initial setup fee of: **\$495.**

**All Annual License Fees (ALFs) are billed separately!**

**Web Browser Users are FREE and Unlimited, if you are using DP/DashBoard/CRM!**

### ONE-TIME SETUP FEE DETAILS

- **The One-Time Setup Fee is "Required" on DPROCLOUD.**
- This fee includes all installation of the various software modules and configuration of the **Microsoft IIS Server**, which is required for installation of the **DP/DashBoard/CRM** product, if purchased. No additional **SSL Certificate** is required. It is provided as part of the **DPROCloud Hosting**.
- This fee includes a **FREE Merchant Processing Account** so that your firm may process "Credit Cards" through the **Accounts Receivable, Sales Order Entry, Point of Sale** and **DP/DashBoard/CRM** software modules. An ability to accept **ACH Drafts** is also available for interested companies at no additional charge.

### PRICING / SPECS for DPROCLOUD

- The standard dedicated server (*which creates your "Private Dedicated Cloud Server"*) includes:
- **4 GB RAM, 2 CPU, 30 GB of Net Storage Space** after **Microsoft Windows**. Based on user counts and usage, more services may be required.
- Customers may install additional "Licensed" applications such as **Adobe Acrobat, F9 Financial Report Writer** and other products on the server as long as they have purchased valid licenses for the products to be installed by our System Administrator. Data Pro does not guarantee support for other third-party applications. **Microsoft Office** products are licensed on a monthly, per user, basis.
- You must have **Infinity POWER (Version 7.50 or higher)** with **Advanced Security** and **POWERServer** to operate on the **DPROCloud**.
- **Windows Graphical User Interface (GUI)** and **DP/DashBoard/CRM (Browser Users) Supported ONLY. No Character-based products.**
- Host-based printers are not supported. Please check your printer specifications. All printers must support **PCL6 Language** at a minimum.

### OPTIONS FOR DPROCLOUD USERS

- |   |                                 |
|---|---------------------------------|
| • <b>DPROCLOUD</b> users can add "Microsoft Office" on their own "Dedicated Cloud." | <b>\$19 per user, per month</b> |
| • Additional <b>1 GB RAM Memory</b> may be added for:                               | <b>\$18 per month</b>           |
| • Additional <b>10 GB of Disk Space</b> can be added at any time for:               | <b>\$11 per month</b>           |
| • Additional <b>1 CPU</b> can be added to your server for:                          | <b>\$18 per month</b>           |

## TECHNICAL SUPPORT SERVICES

- **1-Hour (\$135) & 4-Hour (\$495)** Technical Support Contracts
- On-Site Training Services - **\$150** per hour (*Corporate Trainer*) **\$200** per hour (*Senior Trainer*), plus Travel Expenses
- Web-Based Training Services - **\$150** per hour (*Corporate Trainer*) **\$200** per hour (*Senior Trainer*) (*Up to four client attendees per web session*)
- Custom Forms Modifications (*Minimum Price*) (*Standard – Checks, Invoices, Statements*) **\$200.00** per form modification

## WEB IMPLEMENTATION SERVICES

- **DP/AUTO Scripts - \$250** per hour (*VB Script Modifications*)
- **DP/DashBoard/CRM & DP/API Custom Programming - \$400** per hour

## INFINITY COMMERCE MODULES

**Infinity COMMERCE** is an “Intranet” application. This means it is intended for a company to use for only its internal staff. This includes options from full on-line order processing to **Time Sheet Entry** to your **Payroll** module. The General Ledger financial reporting incorporates advanced “Drilldown” capabilities and advanced integration to a wide range of third-party software applications.

The advanced “**POWERServer**” module that is included with the **System Administrator** module enables a whole new level of access and reporting capabilities for users. This **HTML** integration opens up unique opportunities for use that incorporates today’s latest platforms including the latest phones, tablets and PCs from Apple, Samsung, Motorola and a host of other manufacturers.

You can secure your accounting programs and data on your own dedicated accounting server “**DPROCLOUD.**” You control your data and thereby allow the distribution and access to your data through Data Pro’s exclusive **Infinity COMMERCE** modules. The **Infinity COMMERCE** modules available include **DP/DashBoard/CRM, DP/SCAN & DP/AUTO.**

Let a Data Pro professional speak to you on how we can create a perfect “**customized solution**” via web-based interfaces without ever touching any of your source code in the core “**accounting**” modules. They remain safe, secure and fully upgradeable over time without any customized changes ever being necessary to re-apply again!

By implementing **DP/DashBoard/CRM**, the Sales Order feature allows any type of “**Order**” to be converted to a “**PDF**” and instantly “**printed,**” “**e-mailed**” or “**faxed**” to customers from any authorized user on your network! Likewise for Purchase Orders!

More importantly, using **DP/DashBoard/CRM** with a portable field device, or even on a PC in your office, any **Proposal** or normal **Sales Order** can now allow the user to offer the customer the option to “**sign**” for the **Proposal** or the receipt of the products and services they have delivered to the customer at their warehouse or in the field.

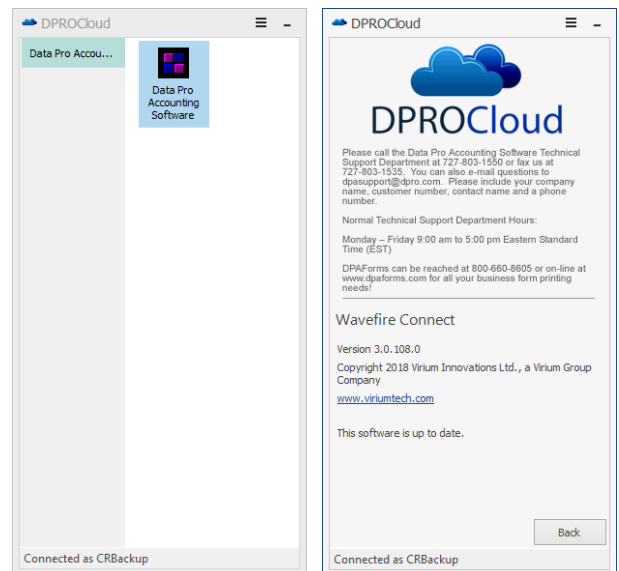
Further, the customer’s signature will be incorporated in a unique and secure **PDF** with a “**time/date stamp**” that can instantly be forwarded to the home office, directly to the client or wherever else you may need. Think of the time savings and benefits this brings to your company when this can eliminate disputes over billing and when you know you have the customer’s approval (*in writing*) for all goods and services that you are attempting to deliver.

This allows for deposits to be posted to the customer’s Sales Order right from their device in the field so their orders are updated instantly! You can then archive these **PDF** files securely on your own network drive.

For superior credit card processing, your **Proposal** or **Sales Order** form can include a “**Payment Method**” box (*similar to the example above*) which allows your customers to enter their credit card information and actually sign that they agree to pay by credit card.

This greatly reduces any risk for Merchants whenever there may be any credit card processing issues where the issue of “**customer chargebacks**” could be a concern. Empowering your field **Sales Staff** and **Technicians** with this capability allows them to expand the scope of their business and the range in which they may conduct business further than ever before.

## DPROCLOUD Wavefire Client Software



(Wavefire Client Software Connects Users to their Dedicated Cloud Server)

### System Requirements:

**Minimum 512 MB RAM, 500 MB Hard Disk**

### Systems Supported:

**Microsoft Windows (11, 10, 8 or 7) (32 & 64 Bit)**

**Microsoft Windows Server (2022, 2019, 2016, 2012, or 2008)**

### Data Pro Accounting Software, Inc.

**111 Second Avenue Northeast**

**Suite 1200**

**St. Petersburg, FL 33701 US**

**727-803-1500 Sales • 727-803-1535 Fax**

**E-mail to: [dpsales@dpro.com](mailto:dpsales@dpro.com)**

**[www.dataproaccounting.com](http://www.dataproaccounting.com)**