

MODULE OVERVIEW

SYSTEM OVERVIEW

The **Advanced Security Administrator** module is specifically designed to allow a company's management to implement a high-level security system targeted at controlling access and usage of various **Infinity POWER** and **Infinity COMMERCE** software applications. It is included in all versions of the **System Administrator** module (#100 & 695).

Designed to operate on top of any firms' existing operating system security implementation, this product provides the company's administrator with the ability to control access to specific programs, options within programs and much more! Since multi-company processing is a big feature in all **Infinity POWER** products, security rights can be copied and implemented across multiple companies from the same programs.

User Groups and individual **User Rights** are available throughout. Configurations can be designed where there are access rights being implemented at a group level or customized all of the way down to the individual level as well. You may have certain executives who have access to all programs and data.

They could be assigned to a unique group called "**Executive**" that has complete and full access rights to everything on the system.

Users in the accounting department could be split into multiple groups. Those users who qualify to access the **Accounts Receivable**, **Inventory** and **Sales Order Entry** modules (**Acctg1**) and those who have the same access, but also get access to **General Ledger**, **Accounts Payable**, **Purchase Order Entry** and **Check Reconciliation** (**Acctg2**). A third group could be assigned only to process **Payroll** only (**Acctg3**).

Further, the "**administrator**" of the system can focus not just on access to the accounting programs themselves, but specific options within each program.

Therefore, it is very feasible that some users would be able to add orders and print packing lists in the **Sales Order Entry** module, but wouldn't have access to any other option.

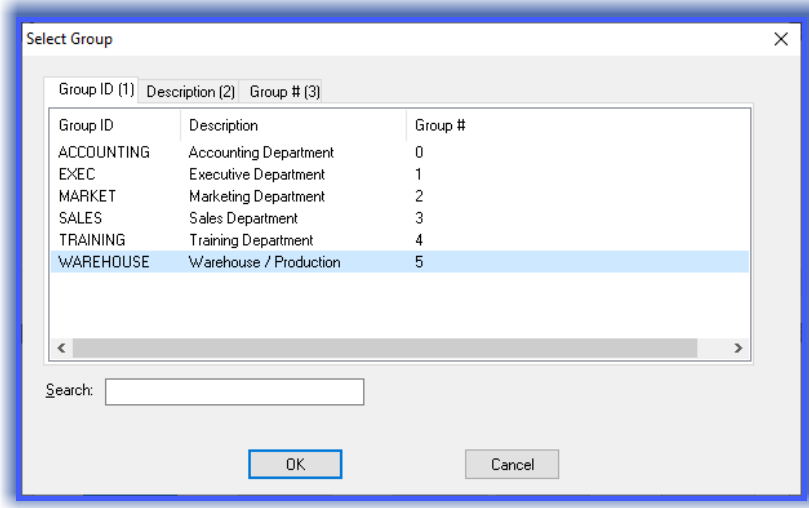
The system also comes with an even more flexible feature that's called "**authorities**."

This feature is designed for those firms who need to allow certain users access to specific options, but only when they are "**authorized**" to do so. This is ideal for Point of Sale type issues, for instance, where a manager's override would be required to allow a sale over a customer's credit limit.

Reports

- ◆ Users (**Details and/or Enabled**)
- ◆ Groups (**Details and/or Enabled**)
- ◆ Authorities (**By Authority or Option**)
- ◆ Logged-In Users
- ◆ Activity Log (**Date/Time Range**)

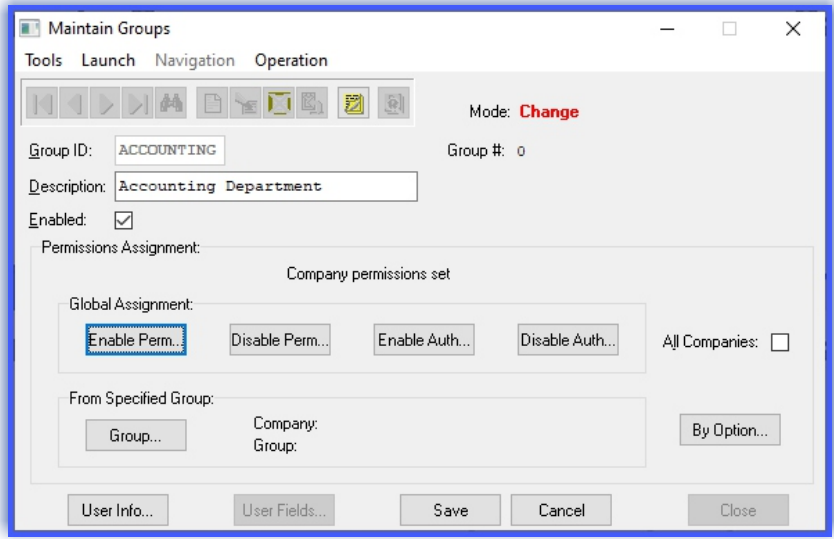
Go to next page for List of Features



Combined with access rights given to each user at the operating system level, the **Advanced Security Administrator** is a highly powerful security tool required for any accounting or electronic commerce implementation. All **Infinity COMMERCE** products, such as the **DP/DashBoard/CRM**, require the **Advanced Security Administrator**. This is the only method of implementing security within any of these programs.

The "**Standard**" security option provides another alternative built into the software for simple security needs, although not nearly as advanced in its capabilities.

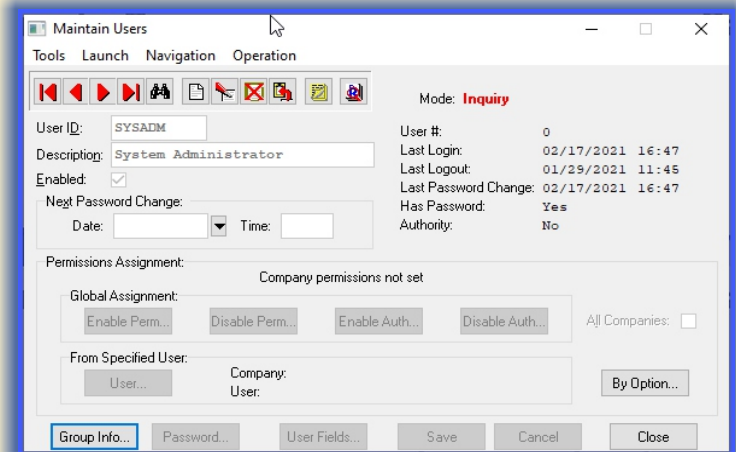
The **Advanced Security Administrator** also provides the ability to protect third party applications that have been added as menu options to the **Infinity POWER** menu system.



Module Features

MODULE OVERVIEW

- Required Application for Installing Password Protection for the **Windows GUI** version.
- Required to implement **POWERServer** with **Infinity COMMERCE** for all Web Site implementations.
- Supports advanced **Password** and **Access Control** capabilities for all **Infinity POWER** versions of the Products.
- Ten (10) Character User and Group ID Numbers (*alpha/numeric*).
- Monitor and control access to highly sensitive accounting and database information.
- Individual Users may belong to one or more “**Groups**” with access to one or more accounting modules.
- Access may be provided to an individual “**User**” or a “**Group of Users**” to the complete accounting module or just specific options within a single accounting module.
- The **Security Administrator** sets the access rights to specific options within a single accounting module for all individual Users and/or Groups.
- Control may be granted at several levels. The complexity of the security configuration is defined by the **Security Administrator** in charge of managing the system on a “**company-by-company**” basis. The system has the power to be very complicated to meet the needs of very sophisticated companies while at the same time providing basic password security access for simpler needs.
- “**Groups**” allow individual users to have access to some accounting options and not others. For instance, an **Executive Group** may allow a President and Chief Financial Officer access to **ALL** accounting files, inclusive of General Ledger and Payroll, while an **Accounting Group1** may provide access to its members only to certain Accounts Payable, Accounts Receivable, Inventory Management and Purchase Order Entry options. **Accounting Group2** may only provide access to another group of users to Sales Order Entry.
- “**Authorities**” may be assigned at an individual user level. This is a higher degree of security where the **Security Administrator** may want to allow users the ability to access certain options, but only proceed when a “**Manager**” with a higher degree of “**authority**” provides a password to allow them to complete their work. For instance, if a customer is making a purchase during a Point of Sale transaction and is charging it to their in-house credit account through Accounts Receivable, they may go over their Credit Limit. The **Security Administrator** needs to allow the User in the security system to access the Point of Sale module and enter a sale. However, they need to provide a Manager an “**Authority Override**” capability to authorize the sale to proceed if the customer exceeds their Credit Limit, or not allow the clerk to continue the sale transaction.
- System tracking of password change dates and times.
- The system includes the ability to copy **Security Rights** from one company to another. Many organizations have similar affiliates or subsidiary companies with staff that work across companies. When a new set of company data files are created, the security files may be copied from a specific company and modified without setting up a whole new structure from scratch.
- A “**Set All Rights**” option for a single user will allow rights created in one company to pass to other companies as well. However, **Security Administrators** also have the ability to control the rights of users from company to company since they may not have the same access rights from organization to organization.
- The “**Force Password Change**” option requires all users to change their password on the next login for security purposes.
- “**Logged-In User List**” features a list of users who are currently in the accounting system so that the **Security Administrator** always knows who is in the system or is not following proper security procedures.
- Provides Optional Control requirements for User Logins or not.
- Allows the Definition of the number of “**login attempts**” allowed.



- Custom security objects may be added, if desired. This provides the **Security Administrator** the ability to provide security access to menu options that may be added to the **Infinity POWER Menu** structure with the **Menu Editing Tool** program for **Third Party Applications** to be called from within the program system. Although now added to the **Infinity POWER** menu system, the Data Pro system knows nothing of these programs nor how to control access to these programs. By adding “**custom security objects**,” the administrator now may implement the same kinds of control over users trying to access these menu options as other **Infinity POWER** accounting modules’ menu options.
- **Security Reports by User** allow **Security Administrators** to choose from a wide range of printing options which include simple listings to all details which include all rights per user to each module that have been “**enabled or disabled**” or only those specific rights which have been “**enabled**” or “**disabled**.”
- Advanced “**Activity Logging**” features allow **Security Administrators** to see how users are accessing the system and their activity levels within the system. User defined controls in the Master Configuration allow the **Security Administrator** to set the amount of detail to be tracked for management purposes. This is a very powerful feature for **Security Administrators** to use in controlling access to their accounting system.
- Define password “**agings**” by number of logins. In other words, if you define **25** times in the Master Configuration, on the **26th** login, the user will be required to change their password again for security purposes.

