

SYSTEM OVERVIEW

A simplified definition of a General Ledger is the accumulation of all financial transactions into one consolidated set of books. These transactions are summarized by account. The **Infinity POWER** General Ledger system expands upon this simple definition to provide the “core” of your accounting and financial reporting needs. This module provides you with your primary financial and managerial accounting reports, as well as audit trails in both Journal (**transaction date order**) and Ledger (**account order**) format. You can have an unlimited number of fully customizable Balance Sheet and Income Statement formats that can each be selected by name.

ON-LINE OR BATCH

All types of transactions can be entered directly into the General Ledger, either as individual Journal Entries or in a “batch” process. Batches of work can be printed with or without a summary of their accounting, then changed, if necessary, prior to posting to the General Ledger. The Session Backup/Restore feature, found in all **Infinity POWER** products, can be used as an immediate “post/unpost” option for individual batches of work. This provides the ability to review the effect on the General Ledger, by batch, prior to proceeding.

HISTORICAL DATA MAINTAINED

One of the most important aspects of the **Infinity POWER** modules is that all accounting data is maintained indefinitely until removed by the user. This means that adjustments to prior fiscal periods or years may be made at virtually any time. **Infinity POWER** contains features that automatically adjust all subsequent accounting periods accordingly!

ACCOUNT NUMBERING SCHEME

The General Ledger offers complete flexibility in the set up of account numbers. You may have a maximum of twenty (20) positions (**alpha/numeric**), with no predetermined format to which you must adhere. This means that converting from existing formats requires no additional restructuring or organizational effort!

INTELLIGENT DEBIT & CREDIT PROMPTS

Recognizing that the relationship between debits and credits can sometimes be confusing, the General Ledger module includes an “intelligent” screen prompt for entering dollar amounts. As each entry is made, the screen will display whether a debit or credit will increase or decrease the balance in an account. This insures fast, easy and accurate input of data.

FUND/NOT-FOR-PROFIT ACCOUNTING

Non-Profit and other organizations that need “Fund Accounting” will find the setup, tracking, and reporting very easy within General Ledger. A simple configuration option turns on this feature and the system handles the “interfund” balancing entries automatically. New “Fund” accounts are setup easily by using the advanced “Copy Range of Accounts” option.

13 PERIOD PROCESSING

The General Ledger module also provides you with the ability to process in either the normal 12 period (**months/calendar**) method or to set up the system to perform “13 period” processing. 13 period processing allows the ability to define each period’s beginning and ending dates and creates a specific consistency in reporting for a wide range of businesses.

A REPORTING PROGRAM

The General Ledger can be looked at as a reporting program more so than an accounting program. The actual accounting is normally created by the integrated modules, such as Accounts Payable or Payroll.

The accounting transactions are then posted to the General Ledger, in detail or summary, on request with a menu option. This means the Invoice just generated in Accounts Receivable will be reflected on the Balance Sheet and Income Statement as soon as you decide to have it so.

By simply performing day to day functions in the integrated modules, you are automatically creating the complete audit trails and data for the Financial Statements. Yet, no other modules are required to run the **Infinity POWER General Ledger**. It may be operated in an integrated mode or can be run “stand-alone.”

All businesses must file a Tax Return. As such, the General Ledger is the tool that puts all your company’s data together for IRS, bank financing and internal reporting.

MULTI-DEPARTMENT/MULTI-COMPANY

The General Ledger module offers a virtually unlimited number of “Departments” or “Profit Centers” within a company. The number of “companies” that may be processed exceeds 47,000. Financial Statements can be printed by Department or printed for the firm as a whole.

CONSOLIDATED FINANCIALS

Separate companies may then be “consolidated” and have the merged information printed in unique Financial Statement formats. This feature, combined with the “Intercompany Processing” capability, allows for easy transfers between companies. Automatic balancing and posting to intercompany accounts in the separate ledgers are accomplished simultaneously.

Automatic departmental allocation can be calculated by a pre-defined percentage. Up to 99 department allocations per transaction are allowed. Copy a range of accounts with department masking for a quick, easy departmental account setup.

FINANCIAL REPORT WRITER

Utilizing the General Ledger Financial Report Writer provides the flexibility to format financial statements to meet specific reporting needs. This is not for just one set of financial statement formats, but for as many as you desire. The Financial Report Writer is built into the General Ledger and is not to be confused with the **Infinity POWER “Report Writer”** that allows for complete customized reports for all modules.

The **General Ledger Financial Report Writer** is tailored to address the specific needs of Balance Sheet, Income Statement and Statement of Cash Flows and reporting. Creating multiple versions of the same report is quite common and often necessary in today’s complicated business environment.

Having that level of flexibility at your fingertips is an important option to have. Invaluable in this Report Writer is the “STAT” feature that takes advantage of the General Ledger account type that allows companies to report statistical calculations on their financial statements. This is ideal for calculating revenues per room in hotels, for example.

Therefore, property managers can calculate items such as “room rates per night” and “number of rooms rented” as is common in the Hospitality Industry on an Income Statement.

Reports

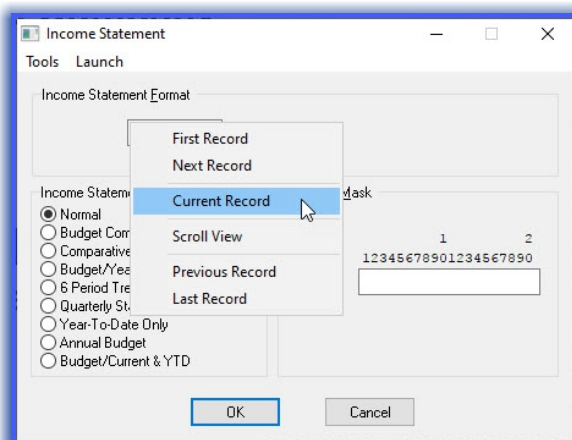
Financial Reports

- ◆ Trial Balance
- ◆ Summary Trial Balance
- ◆ Working Trial Balance
- ◆ Accountant's Trial Balance
- ◆ Balance Sheet
 - ◇ Normal
 - ◇ Budget Comparison
 - ◇ Comparative Year
 - ◇ Comparative Month/Year
 - ◇ 6 Period Trend
- ◆ Income Statement
 - ◇ Normal
 - ◇ Budget Comparison
 - ◇ Comparative Year
 - ◇ Budget/Year-to-Year
 - ◇ 6 Period Trend
 - ◇ Quarterly Statement
 - ◇ Year-To-Date Only
 - ◇ Annual Budget
- Budget/Current & YTD
- ◆ Support Schedules
- ◆ Statement of Changes
- ◆ Statement of Cash Flows
- ◆ Ratio Analysis Transaction Reports
- ◆ General Ledger Report
- ◆ Transaction Journals
- ◆ Batch Edit Report

Maintenance Reports

- ◆ Chart of Accounts Listing
- ◆ Account Maintenance Report
- ◆ Financial Statement Maintenance
- ◆ Financial Statement Alignment
- ◆ Recurring Entries Report
- ◆ Consolidation Entities Report
- ◆ Account Budget Report

Go to next page for List of Features



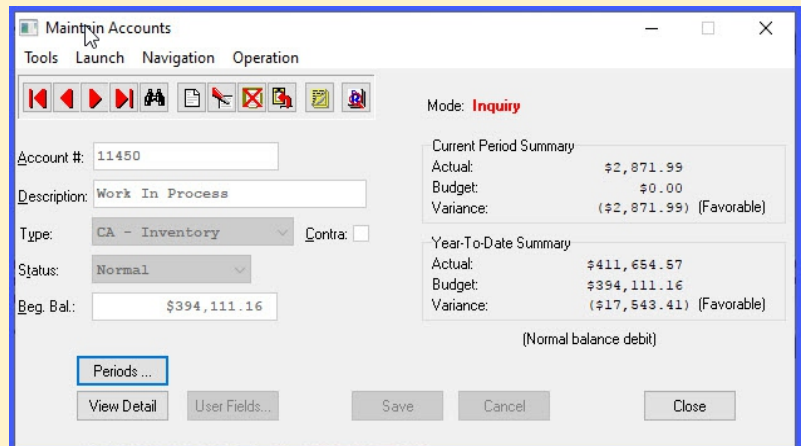
THIRD PARTY INTEGRATION

Virtually any third party software product can integrate with the **Infinity POWER General Ledger** module as long as they can post an ASCII file matching our specifications. It's that simple!

Module Features

MODULE OVERVIEW

- Twenty (20) Character Account Numbers (alpha/numeric).
- Unlimited number of Accounts, per Company.
- Unlimited Transactions, per Company, per Month.
- Allows "Importing" of Chart of Accounts from other systems for easy conversions.
- Divisional/Department Reporting.
- Twenty (20) User-Definable Transaction Journals.
- Process in Multiple Fiscal Periods at Once (Even Across Fiscal Years).
- Allows Intercompany Journal Entries with Auto-Balancing Feature.
- Merge Multiple Companies' Data for Consolidated Financial Statements.
- Optional Monthly and Annual Recurring Journal Entries.
- Optional Descriptions for Each Line of a Journal Entry.
- Automatic "Reversing" Journal Entries.
- Automatic Fiscal Year End Closing.
- Performs Currency Conversions (Consolidated Financials).
- Daily, Weekly, Monthly, Quarterly and Annual Transaction Reports.
- Budgeting by Month with Comparative Financial Reporting.
- Comparative Year-to-Year Financial Reporting.
- Unlimited Fully Customizable Financial Statement Formats.
- Ability to Define "STAT" accounts for percentage calculations on Financial Statements.
- Allows "On-Line" or "Batch" Updating and Editing of General Ledger.
- On-Line Journal Entry allows up to fifty (50) Accounts per Journal Entry.
- "Batch" Journal Entry allows up to 500 Accounts per Batch.
- Up to 1000 "batches" allowed per company at one time.
- "Intelligent" Screen Prompts instruct you whether Debits or Credits should be used for Particular Accounts during Journal Entries.
- Allows "13" Period Processing.
- Allows easy Integration with Third Party Programs.
- Provides Rounding of Decimal Places on Financial Statements.
- Includes Accountant's Trial Balance.
- Advanced Budgeting Module includes a variety of ways to calculate budget figures based on current activity and prior year activity.
- Warning Messages during "Posting of Integration Files" notifies on screen of any errors in the posting process (e.g., Invalid Account Numbers, Invalid Periods).
- Formatting Capabilities in the Financial Statement Set Up options include Rounding of Decimals, Stats, Ratios, and Percentages.
- Options to allow the Import/Export of Financial Statement Formats.
- Allows Chaining of Financial Statements for simplified printing of multiple linked reports.
- Advanced Budgeting Capabilities include the ability to define up to twenty-six (26) unique budgets, per fiscal year.
- Integration from Batch Entry to Check Reconciliation.
- Budgeting feature allows for the use of actual and previous budget data for the allowance of seasonal trending and projections.
- Recurring Journal Entry capability included as part of the Batch Entry options.
- FUND Accounting/Not-for-Profit Accounting feature included.
- Description Only Lines available on all Journal Entry Screens.
- "GL Account Status" field determines whether the General Ledger account is "normal," "stat account," "heading only," "inactive temp," "inactive perm." The transaction entry options will not allow transaction posting to an account unless the status is "normal" or "stat account."
- The General Ledger Report when printed for QTD or YTD, subtotals by month with a grand total at the end of each account.
- Features "Account Masking" on Reporting so that any portion of a General Ledger account number may act as the control variable or important section to sort a key financial report (i.e. Departmental/Divisional Reporting).
- "Import a Batch" option allows you to import batches of General Ledger entries.



- Includes a special utility function to copy a "range" or "group" of General Ledger accounts. The net effect of this feature is that you may easily add literally hundreds of accounts at a time when you are setting up new Departments or Divisions within a company.
- Features the ability to "Export General Ledger Accounting Data" directly to a Microsoft Excel spreadsheet. This allows users to export General Ledger Account Number, Description, Actual and Budget information for the current year and prior year into a specific Excel Spreadsheet format (requires Microsoft Excel).
- After "exporting" budget information from General Ledger to Microsoft Excel, the "Direct Update" feature allows users to create their own customized budgets within Microsoft Excel and directly update the budget information back into the General Ledger module automatically. Since the General Ledger module is capable of storing up to twenty-six (26) unique budgets, this is quite an extraordinary capability.
- The advanced multiple "Departmental Allocation" feature allows users to set up a table that defines how transactions should be allocated to each departmental General Ledger account number when they are posted. The system allows for up to ninety-nine (99) allocations per account number, per transaction. This is ideal for those companies with multiple departments who need to pre-allocate items like telephone, electric, insurance and other expenses that may vary monthly in total dollar amount, but not the percentage allocation that needs to be charged to each department on a monthly or quarterly basis.
- The "Batch Edit" feature prints and organizes by transaction date verifying monthly totals balance.
- Direct integration with INFOR's F9 Excel-based Financial Statement Report Writer for customized GL Reports and Graphs. (3rd Party)

SYSTEM INTEGRATION (System Administrator Required)

- Accounts Payable
- Purchase Order Entry
- Accounts Receivable
- Inventory Management
- Sales Order Entry
- Point of Sale
- Payroll
- Job Cost Main Module
- Customer Support Management
- Check Reconciliation
- DP/DashBoard/CRM

GRAPHS*

- Account Balances by Month
- Comparative Account Balances