

SYSTEM OVERVIEW

The **Infinity POWER Report Writer** is a powerful utility module designed to create custom reports. It can access data from all **Infinity POWER** modules. The **Report Writer** provides you with the flexibility of manipulating a company's accounting information to create reports as desired. Best of all, you can print all reports by names which makes sense to you!

EASY ACCESS

The program provides easy access to data files, data records and data fields in all **Infinity POWER** programs. You can use this data "as is" to print reports, but you can also use "structured programming logic" for deciding what records to include on a report or use calculations to create new fields for printing on reports.

COMBINE DATA

Information from up to ten different data files may be combined to create a single report. For example, you can relate data from modules as diverse as **General Ledger, Accounts Receivable, Inventory** and the **Job Cost Main Module** on the same report. Very informative reports can be created using this feature. Plus, you can combine data from multiple companies into a single report!

SIMPLE TO USE

The **Report Writer** module design gives you the same easy-to-use interface as all other **Infinity POWER** accounting modules. This includes the use of the "pop up" scrolling search windows that make the selection of valid answers easy. This consistent user interface significantly shortens your learning curve. The creation of simple listings, specialized mailing labels and other basic reports is simple even for the most inexperienced user.

PROGRAMMER'S POWER

More experienced users (*familiar with databases, spreadsheets or general programming techniques*) will truly see the power that can be derived from this program. Although easy to use, the **Report Writer** provides many advanced features normally reserved for custom programs. Advanced searching and sorting capabilities, temporary "work files" and advanced "criteria" statements provide maximum power! These features provide for complicated reports, performing dozens of calculations with special formatting techniques that are easy to create.

REPORT MODELS

The **Report Writer** utilizes "report models" as the actual set up of each custom report. These models allow you to create and save up to **30,000** reports to disk. You can call up these reports, by name or description, at anytime for printing. The program also allows you to copy or change report models as you deem necessary.

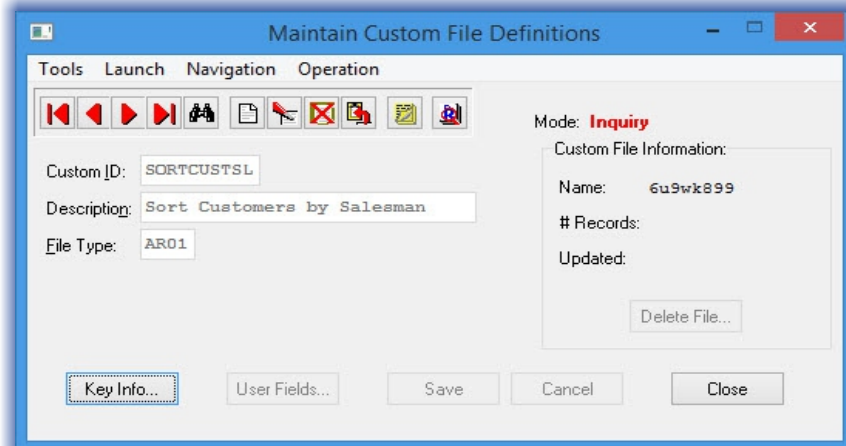
The "copy" feature allows you to quickly set up a series of reports that continually build upon one another for more and more detail. "Chaining" of reports provides the user with the ability to automatically print a complete series of reports with one selection.

DATA EXTRACTION

The **Report Writer** program is a very useful tool for the "extraction" of information from an **Infinity POWER** accounting module.

The data from a file can be "exported" to a file in a special order or format. The **Report Writer** can organize information into virtually any format.

Go to next page for List of Features



These programs include tax packages, fixed assets packages, databases, spreadsheets, and third party **EDI** purchasing and billing systems.

WORK FILES

The **Report Writer** also provides an advanced feature called "work files." These work files give you the ability to create your own custom data files to use in the creation and printing of custom reports. Therefore, when you need to create new or calculated pieces of data to place in a report, a work file can provide the necessary help.

IMPORT/EXPORT REPORTS

The system allows for the "import" or "export" of all report models. This key feature lets a customer purchase a copy of **Report Writer** while having their CPA, Accountant, Computer Dealer, Authorized Trainer or a Data Pro Support Services representative create their reports. Customers simply copy and "import" these reports for immediate use.

Users don't need to be trained or learn how to use the software and learn logic of report generation. Just print reports! It's that easy!

PASSWORD PROTECTION

You can set up passwords "by report." This allows multiple users to use the **Report Writer** module simultaneously without risking access to unauthorized reports containing sensitive company information by users without permission.

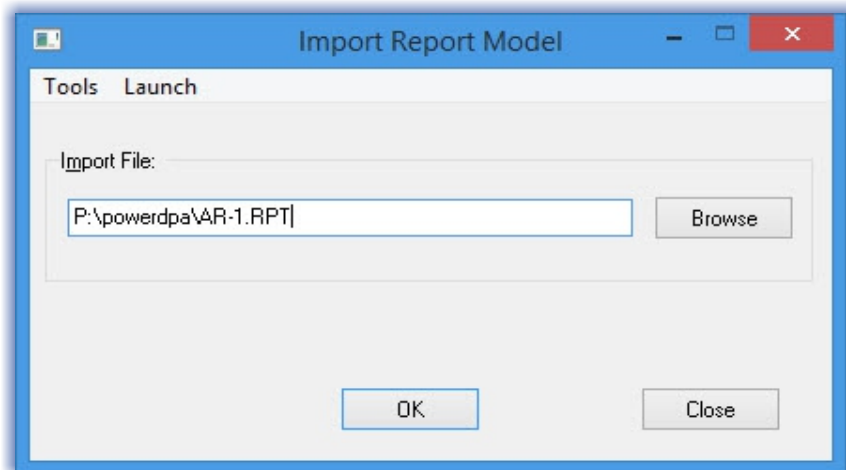
RUN TIME VERSION

For users who do not have any experience or interest in setting up their own reports, but do have some custom reporting needs, a "Run Time" version (**Part #281**) of the **Report Writer** is available. This module allows you to print custom reports only.

Creating or changing report models is not available with this version. A third party such as a Consultant, trainer or the Data Pro Support Services department can provide the custom report models for those clients not ready to generate their own.

SAMPLE REPORTS

Both the standard **Report Writer** module and the **Run Time** version come with a wide variety of report models that may be used with any of the **Infinity POWER** modules. Utilizing these examples as a guide will prove extremely helpful during the creation of new reports.



Module Features

MODULE OVERVIEW

- Allows creation of customized reports using an **Infinity POWER** accounting database.
- Ideal software utility for data mining and data extraction from accounting data files for use with a wide range of third party products.
- Works superbly with third party applications, such as **“Worth IT Fixed Assets,”** to generate the required information to flow to a customized form or report.
- User-Defined page size, page width, headings, default output device, as well as report contents.
- Automatic report spacing and auto-calculation of heading lines.
- Optional header and page number printing.
- Special printer control codes within the report (*such as forced line feeds, character control codes, font changes and new page*).
- Multi-year access to all data files and reporting for comparisons.
- Multi-company merge capability of data files.
- Has ability to access User-Defined **“fields”** and User-Defined **“files”** for **“customized”** reporting information.
- Complete subtotaling, totaling, and grand totaling capability.
- Boolean Comparisons for specific file search selection.
- Includes wild card comparisons.
- Features masking options on data fields for specific record selection.
- Change **“data sorting”** and **“selective data selection”** by creation of work files.
- Statistical values that can be changed easily for different report comparisons.
- User-Defined formulas that can include DP fields, statistics or other formulas.
- Report body control by using criteria to create records based on a Boolean comparison.
- **“Password Control”** capability by individual report prevents unauthorized users from accessing key accounting data files.
- Global variable formulas that can span multiple reports.
- Print report to an ASCII file, comma delimited text file or PRN file.
- **“Copy a Report”** option makes duplications and variations simple.
- Advanced feature allows reports to be **“chained”** so that one report can be automatically launched at the conclusion of the current report.
- **F3 (system date)** automatically detects which data files, by fiscal year and company, to extract data from without special coding required to customize each report. This would be required in products, such as Crystal Reports.

