

SYSTEM OVERVIEW

The **System Administrator Standard** module acts as the “overhead” module that drives all of the **Infinity POWER** integrated accounting modules. One **System Administrator** module is **required** per computer system. Whether you purchase one accounting module, such as **Payroll**, or have ten integrated modules, the **System Administrator** must be installed first. All user counts are global and allow access to any installed **Infinity POWER** module and can be used by any of the included interfaces. These interfaces include the **Window Graphical User Interface (GUI)** or the “web-based” versions of the product.

It is this overhead module that encompasses many of the standard “global” features that are found throughout all **Infinity POWER** products. Other features such as the **Productivity Tools (Appointment Calendar and Address Book)** are also built-in as part of the **System Administrator** module.

Included along with the purchase of the **System Administrator** is the **POWERServer** module, which is the service module that provides the direct communication link to the various accounting modules by other add-on software products, such as Data Pro’s **DP/Dashboard/CRM, DP/AUTO, and DP/SCAN**.

Additionally, you receive the **Advanced Security Administrator** module, **POWER Upgrade Utility, Forms Generator** and **Menu Editing Tool**.

TWO VARIATIONS!

There are two types of **System Administrator** modules that may be used with all of the **Infinity POWER** products. The information included in this data sheet applies to the “**Standard Version**” or what we refer to as “**the minimum configuration that applies to every system.**”

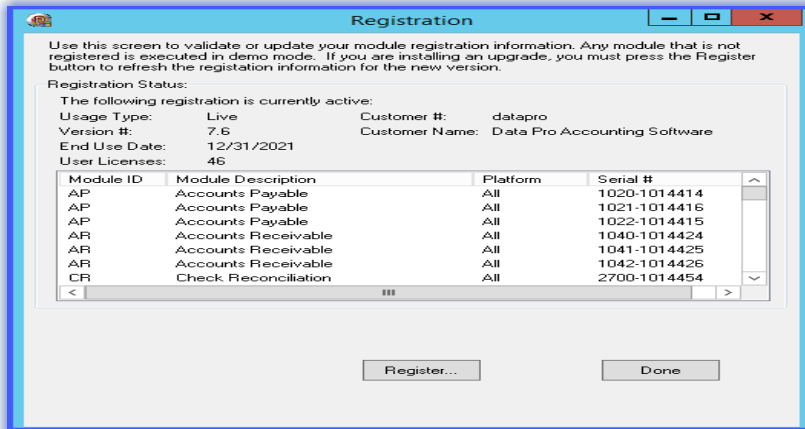
Part #100-System Administrator (Standard Version) is the building block from which all other configurations are built. As stated earlier, all accounting modules **must** have at least one **System Administrator** to operate the accounting modules, regardless of the variation installed.

The other version that is available provides for additional features that incorporate all of the features described within this data sheet and much more. The **System Administrator Client/Server SQL Version (Part #695)** adds on a new set of advanced capabilities to provide optimized functions for network processing and data management in an **SQL** database environment.

The **System Administrator Client/Server SQL Version** seamlessly upgrades all of the **Infinity POWER** accounting modules to a full **SQL** accounting system without changing the user interface. Your staff wouldn’t know the difference! This allows companies to build and expand their base accounting system at their own pace without ever outgrowing their needs. Whether it’s the **Microsoft SQL Server 2022, 2019, 2016, 2014, or 2012**, the **SQL** architecture provides maximum flexibility, extended security and capability any company needs to grow for years to come!

Any business can purchase the right level of capability and continue to grow by simply “**upgrading**” their current **System Administrator** for the next level up.

Overview continued on next page



The **System Administrator** module is responsible for the creation of all new and yearly data files for each company that is run within the software system. This is also the module that controls all annual registrations of all of the **Infinity POWER** software modules.

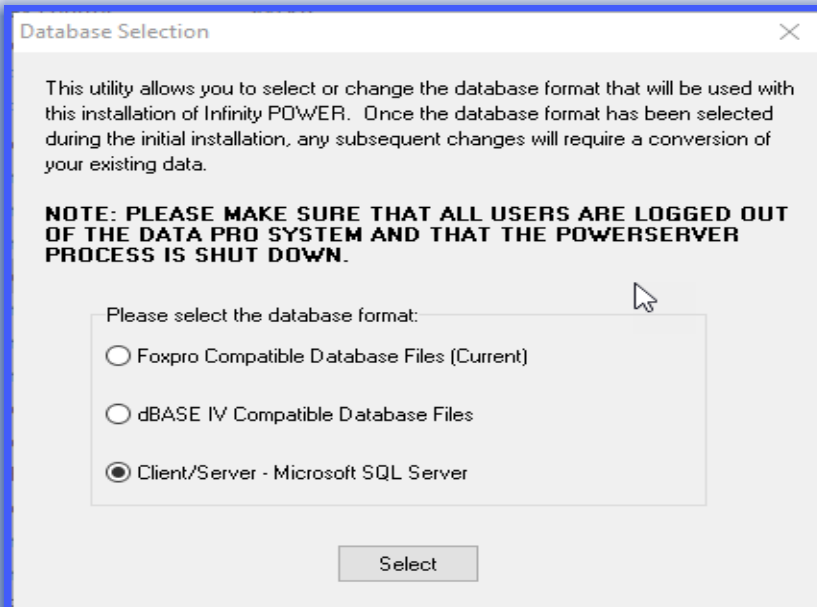
Data Pro Accounting Software even offers a **100%** trade-in value towards the upgrade price to the next higher version of the **System Administrator** module!

You can start today with the standard version of the **System Administrator (Part #100)** and always know that every dollar counts towards any growth you need in the future.

Enjoy all of your e-commerce capabilities today and much more without necessarily having to engage a full **SQL** solution. The choice is yours! The **POWER** is brought to you by **Data Pro Accounting Software!**

Look at the many other standard features you will find throughout all accounting modules because they all come as standard features with either version of the **System Administrator** module (**Standard or Client/Server SQL**).

The **Infinity POWER** accounting modules are designed to be an efficient set of accounting and office automation tools regardless of the version you are implementing. All user screens, reports and options are designed to follow a strict, consistent, format that maximizes your ability to perform within each system.



Installing or upgrading to the **Client/Server SQL** product for any version of the **Microsoft SQL Server** is very easy as this screen clearly illustrates. It is simply a choice on a single screen during the standard installation!

Module Overview

Continued

CONSISTENT LOOK AND FEEL

Great care has gone into the design of these systems so that all modules look and feel alike, while still performing their various accounting functions. For this reason, once you have learned how to use one **Infinity POWER** program, you basically understand them all. This, of course, changes when you mix and match certain operating system versions.

All versions of the products follow a strict format that is consistent across all operating system platforms and all modules. All **Infinity POWER** products follow the same design and share the same data file structure. That's true for "**web browser**" based applications as well as "**Windows**" applications.

ON-LINE HELP

All **Infinity POWER** modules provide "**On-Line Help**" at any point in the program. This help includes the outline of which keys on the keyboard perform certain tasks. This replaces the requirement to have a template for your actual keyboard.

ON-LINE MANUAL

The "**On-Line Manual**" displays the entire discussion of a specific option. Just one keystroke calls it up from where you are working. You can look up information by Help Topics, Indexes, or use the Advanced Search Function. Plus, you can print out any section on demand. All manuals use a browser-based help file format.

EASY INSTALLATION

All modules come with an easy installation program designed so that anyone can quickly install the software and begin processing immediately.

DP/UPDATE

The **System Administrator** comes with a standard updating program that allows all users to obtain the latest updates for their programs from Data Pro's corporate web site with one click of the mouse. It's called **DP/Update**. Users get the latest minor changes and feature enhancements for the current version they are running without any major installation options required to be run. A real time saver and it's as easy as it gets! An Internet connection is required.

FEATURES APPLY ACROSS PLATFORMS

Features discussed throughout this data sheet, except where noted, apply to all platforms supported by the **Infinity POWER** products. This includes the **Windows Graphical User Interface (GUI)** and web-based products, such as **DP/DashBoard/CRM**.

UNIQUE INTEGRATION ACROSS PLATFORMS

The result of the shared design and data file structure is an accounting system that does not require a company's management to shift its entire staff to operate under one environment or another. **Infinity POWER** allows users to share data simultaneously with the **web-based** products. The result is that management can decide which users in its organization use the **Windows GUI** version while others can use the web-based products, such as **DP/DashBoard/CRM**, for more convenience and customized applications.

For instance, just because the President of the company has access to perform Journal Entries in General Ledger and print financial statements from the **Windows GUI** version of the product does not mean he or she wants their Sales Department doing the same.

Management has the flexibility to allow other users to access key parts of the system through their choice of devices such as a Laptop, Tablet or Smartphone for Inventory Inquiries, Customer Inquiries and Sales Order Processing. The programs allow maximum flexibility to management for deployment.

POP UP SUB-MENUS FOR MULTI-CHOICE PROMPTS

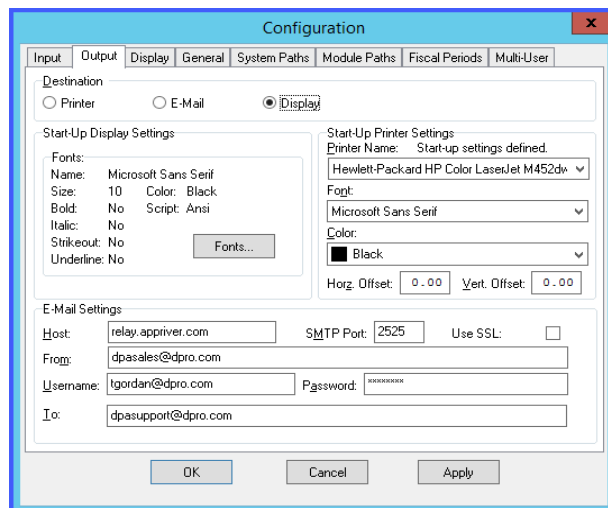
Don't remember the right code or have all the necessary answers to multiple choice questions? All **Infinity POWER** programs have "**Pop Up**" windows that allow for the selection of all available options. No more fumbling while looking for answers; important when you're just getting started.

FULL WINDOWING

"**Windowing**" is a method utilized by all products in a very unique way. Mini-screens of information are displayed or "**Popped Up**" on the screen any time special options or selections are required. These windows are color coded (*even on monochrome screens, through intensities*) to attract your attention immediately to the **Active** option. When the system completes a specific option, the window disappears and the next active window changes to the **Active** color. Other window colors are utilized to quickly notify you of warning messages and user prompts.

STARTING NEW YEAR'S FILES

The **System Administrator** module consolidates one of the most important functions that must be done each fiscal year into one option.

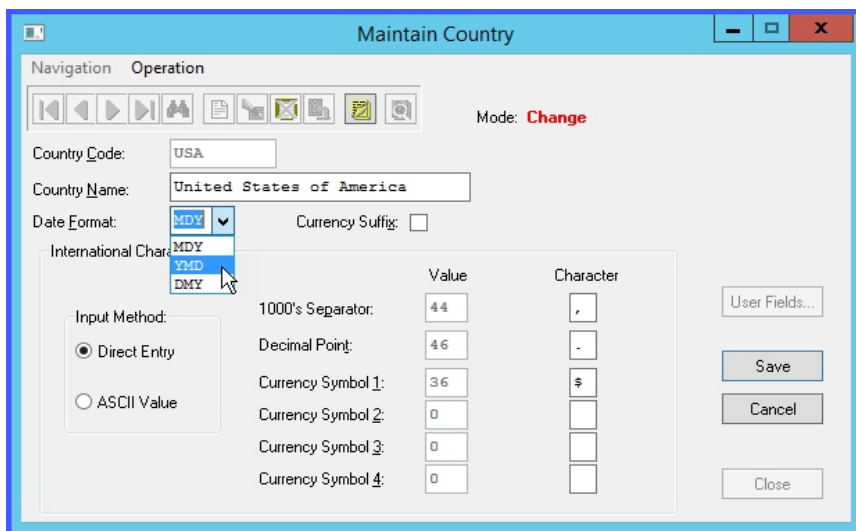


This option defines the configuration settings that provide users the ability to print all reports via e-mail in the **Windows GUI** version of the product. Reports can also be sent to a variety of local and network printers, to the screen (display) or to text files.

Since the **Infinity POWER** software provides for support of multiple companies across multiple fiscal years, each company must create a new set of data files at the end of their fiscal year end. For many companies, that is at the end of the calendar year. For others, it could be June, September or whatever other fiscal year end has been defined within the software, including a **13 Period** date range.

The **System Administrator** module provides for a single and simple option to allow users to choose the modules one at a time, or all at once, to create "**New Year's Files**." This makes a copy of the current data files, by company, and creates a new set for the upcoming fiscal year automatically.

Each company can process using a different currency format which includes dates, commas and other information to be formatted to the style inherent to each country. Therefore, one company could be in British Pounds while another is in Japanese Yen.



Module Overview

Continued

WORD PROCESSING & DATABASE INTERFACE

All reports may also be "exported" to a straight ASCII Text file for importing directly into most Word Processors, Spreadsheets, Database, and a wide range of 3rd Party applications.

MULTI-COMPANY PROCESSING

Keep books for more than one company easily. All **Infinity POWER** programs allow you to process up to **47,000** different companies simultaneously!

HOLDING ACCOUNTING PERIODS OPEN

Unlike many accounting systems, the **Infinity POWER** programs maintain yearly data files which allow you to go from month to month by simply changing the "System Date." All detail is not deleted when a new month's or new year's processing begins. As such, users may continue processing in a new year while making adjustments to a previous year.

Balances may then be brought forward into the new fiscal year at anytime and as often as desired. Security options allow users the ability to view data in a previous fiscal year, but not make any changes to the prior year's data.

USER-DEFINABLE SCREEN COLORS

Color your screen to fit your personal preferences. You may change the selected colors as often as desired or return to the standard system colors by using the system defaults. **Windows** users control their color schemes through the **Windows** operating system setup.

FULL COLOR GRAPHICS

Sometimes it is important to be able to get through the details so that you may "See the forest for the trees!" Color Graphics can simplify volumes of accounting detail into either **Bar/Pie Graphs** or **Line Charts**. These various types of graphs show trends, rankings and other types of information not readily visible through dozens of pages of reports.

ON-LINE QUICK ADDS/CHANGES AND INQUIRIES

All modules offer the ability to perform inquiries, additions and changes to files on the "fly." Without having to stop processing mid-stream in an option, this convenient "Pop-Up" ability in the "Tools" feature under **Windows** makes processing simpler than ever! Depending on the current module that is loaded, this screen will change to reflect the options that are appropriate to that particular module.

SYSTEM DATE LOCKOUT

This managerial control feature allows the **System Administrator** multiple options to control access to prior accounting periods. This can include a complete lockout function or a limited access which allows viewing of data or printing of reports, but restricts the ability to post transactions to a prior fiscal period. Used in conjunction with the **Advanced Security Administrator** module, users could be controlled and granted access, but only with a "Managerial Authority" required.

QUICK LAUNCH WITH JUST A CLICK!

This allows users to easily define specific menu options in **Windows GUI** as **Quick Launch** items from within the currently loaded accounting module. This is ideal for users with customized needs which can now be tailored to their workflow.

For instance, in **Accounts Payable**, you may want the option to voucher an **Accounts Payable** item as well as change an open item pay status without interrupting the current menu option. In **Accounts Receivable**, the **Quick Launch** menu choices will be completely different.

The screenshot shows a 'Company' configuration window. It includes fields for 'Number' (with a dropdown menu), 'Name' (with a dropdown menu), 'Phone', 'Last Month' (with a dropdown menu), 'Include Country In Address' (checkbox), and 'Country Code' (with a dropdown menu). There are also fields for 'Mailing Address' and 'Shipping Address', each with a 'City' and 'State/Province' dropdown menu, and a 'Zip' field. A 'New Company' button is at the bottom left, and 'OK' and 'Cancel' buttons are at the bottom right.

The **Infinity POWER** accounting system supports the processing of up to **47,000** different companies at once!

FAX GENERATION OF REPORTS

Infinity POWER Windows users also enjoy the luxury of generating any report to a FAX machine that may be sent on demand. Since the **Windows** version can access any of the **Windows** operating system defined printers, a FAX program, such as **E-Fax** and **Microsoft Fax** can easily be utilized for sending reports via FAX. This is a great technique for sending Purchase Orders on demand to vendors right from the system!

E-MAIL GENERATION OF REPORTS

Infinity POWER Windows users also enjoy the luxury of generating any report to an e-mail document that may be sent on demand. An e-mail host definition and the user's e-mail address are all that are required to send reports as e-mail files.

SCREEN REVIEW OF REPORTS

Every report in all **Infinity POWER** modules may be previewed on the screen in addition to being printed. Options within the software allow you to print the whole report to the printer or just print the current page to the printer. Search options allow you to look for specific pieces of information within any report that you have generated to the screen instead of wasting tons of paper and then searching for it manually. You can look for a specific number or descriptive text, transaction number or much more.

Menu options allow you to scroll through the report (which could be dozens or hundreds of pages long) one page at a time or you could just jump to the last page of the report. Or, if you know which page you desire, you can just "jump" to a specific page number. Additional options allow you to "zoom in and zoom out" of the report to get varying looks of the data on the screen at your convenience. Of course, if your e-mail configuration has been defined in the Master Configuration of the **Infinity POWER** software, from the screen, you can then forward a specific report to an e-mail address on demand.

The screenshot shows a 'Configuration' window with a 'Fiscal Period Dates' tab. It features a table with columns for 'Item #', 'Period', 'Beginning Date', and 'Ending Date'. Below the table are buttons for 'Compute Dates', 'Save', and 'Cancel'.

Item #	Period	Beginning Date	Ending Date
1	01/2021		01/01/2021
2	02/2021	01/02/2021	01/29/2021
3	03/2021	01/30/2021	02/26/2021
4	04/2021	02/27/2021	03/26/2021
5	05/2021	03/27/2021	04/23/2021

13 period fiscal year processing is a standard feature on a company-by-company basis! The software will automatically calculate **65** periods of date ranges for you once the beginning date is entered or each date range may be manually entered as desired. **DP/Period Manager (Part #296)** allows users to manage unlimited number of date ranges using Microsoft Excel five years at a time. A must for anyone with **13 Period** accounting!

PRINT MULTIPLE COPIES OF REPORTS

If multiple copies of reports are needed from the program, it's not necessary to run the option multiple times. **Infinity POWER** provides a standard option that allows you to specify the number desired and the programs do the rest! If you have sent the report to the screen first, you can continue to choose to print additional copies of any report as you desire before exiting the screen reporting option.

FULL SCREEN EDITING CAPABILITIES

Don't retype the whole line! If you make a mistake, move your cursor to the spot and insert, delete, correct or type over your error. You may also move directly to a specific line.

TOP RATED SUPPORT

One of the primary needs for any user is to be able to get assistance when using a product. **Data Pro Accounting Software** has consistently been top rated when it comes to providing support services for all of its advanced accounting solutions. Data Pro offers several support programs. Technical Support is available either on a per-minute or contract basis. Users get to choose a flexible plan that suits their needs best. With over **98%** of all support calls answered "on-line" each day, your answers are just a phone call away. Don't forget we offer on-site and web training services too.

Module Overview

Continued

FILE IMPORTS

Most modules have various types of file import options that provide the ability to add to or update both **Infinity POWER** master records and transaction files. This information may come from a wide range of sources including third party programs in the form of **ASCII (American Standard Code for Information Interchange)** files. No re-keying of data or access to source files is necessary. Many modules offer additional importing capabilities with options such as physical count and price list imports. This is ideal for use with bar code scanners and price files from vendors. Converting from other systems has never been easier!

PRODUCTIVITY TOOLS

Though not required to perform accounting functions, all **Infinity POWER** products come with a complete assortment of office utility programs or “**Productivity Tools.**” This includes an **Appointment Scheduler** and **Address Book**, all included as part of the **System Administrator**!

POP-UP CALCULATOR

The **Pop-Up Calculator** is available anytime. It includes full calculator capabilities, in addition to printing the tape to a printer. It also allows Recall numbers that may automatically be “called” into a specific data field within a particular program. There’s no need for separate adding machines anymore!

SUPPORTS HEWLETT-PACKARD AND OTHER LASERJET COMPATIBLE PRINTERS

For the ultimate in professional looking accounting reports, LaserJet printers fit the bill. All **Infinity POWER** modules support the use of LaserJet and compatible printers. In addition, all modules support the printing on most continuous dot matrix forms (e.g., **invoices, checks, statements**) and also support “**laser forms,**” including preprinted forms with Company Logos, screenings, patterns, and much more.

INTEGRATION FILE TRANSFER

All modules generate an integration file that may optionally be posted to the General Ledger, but is typically posted directly. The system provides a menu-driven option that allows for the convenient transfer of General Ledger posting batches from one computer system to another. Use this option when working with a CPA firm using “**Client Write-Up**” style features found in the General Ledger module or to integrate with a remote office.

ERROR LOG TRACKING

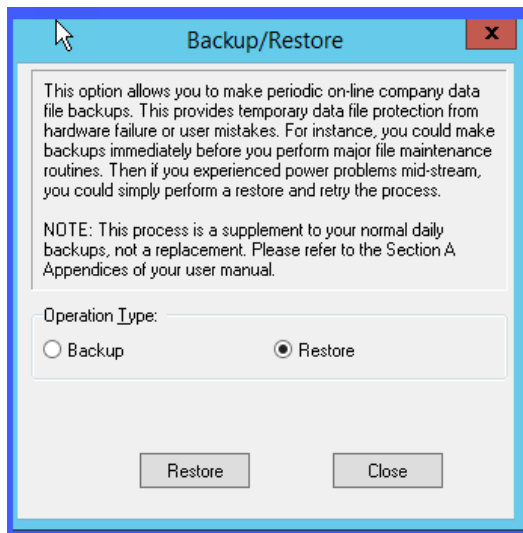
The **System Administrator** module provides a utility that tracks all error messages that occur during processing in any **Infinity POWER** module. These messages are automatically written to a file for later review and analysis.

SYSTEMADMINISTRATOR INCLUDES:

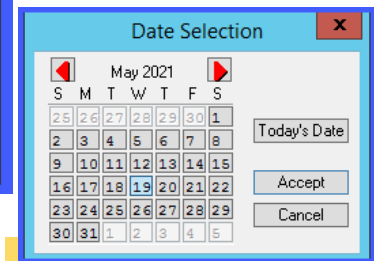
The **System Administrator** also includes the **Advanced Security Administrator, POWER Upgrade Utility, Menu Editing Tool, Forms Generator** and the **POWERServer.**

ADVANCED SECURITY ADMINISTRATOR

The **Advanced Security Administrator** module is specifically designed to allow a company’s management to implement a high-level security system targeted at controlling access and usage of various options and functionality within the accounting system. Designed to operate on top of any firms’ existing operating system security implementation, this product provides the administrator with the ability to control access to specific modules, options within modules and much more!



All version of the product (including the Windows GUI shown here) include a standard session backup and restore feature. Backups are vital to the protection of all valuable accounting data. Putting your applications and data on the **DPROCloud** insures your always backed up!



“Pop-up” calendars make choosing dates a snap throughout the software.

The system also comes with “**Standard**” security for those users who aren’t ready to deploy such a high level of security due to their company size. This allows for open access to the accounting while still requiring a simple login and/or password requirement, based on management’s choice.

MENU EDITING TOOL

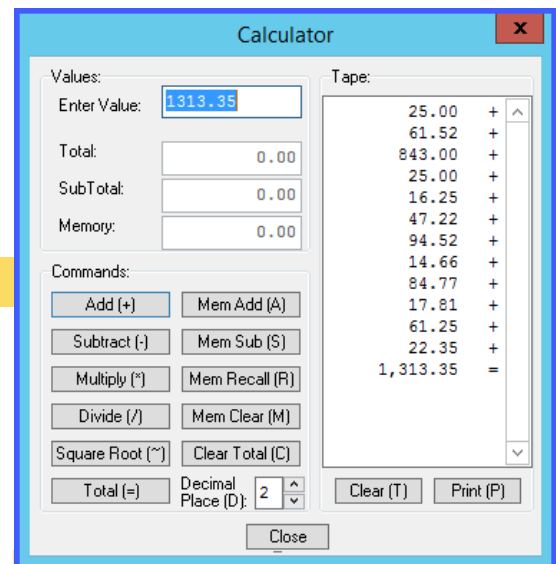
The **Menu Editing Tool** is a very powerful tool which allows the ability to create custom menu files within the **Infinity POWER** programs or change ones that already exist. With this program, you can remove options that certain users should not have access to or options that your company does not use. You may change the terminology or wording of the menu options to suit your business. You may create menus that have options from different modules all combined into one screen. You may also make menu options to access other third party applications directly from within the **Infinity POWER** programs to make it more convenient for your users to perform their daily functions.

POWER UPGRADE UTILITY

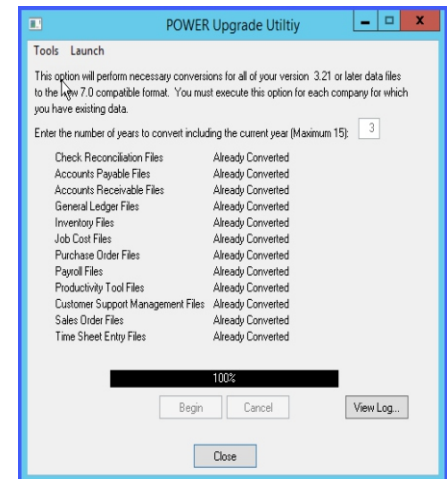
The purpose of the **POWER Upgrade Utility** is to allow early users of Data Pro products to upgrade their **Infinity POWER** data files to the most current version of **Infinity POWER** data file structure in one step. The **POWER Upgrade Utility** simply reads your existing data in the **Infinity POWER** format and upgrades existing files to the current format. When run, the **POWER Upgrade Utility** automatically reads your predefined data path for the current company and year, upgrades only those files that have been restructured. You may convert up to fifteen (15) years of data files at one time.

TRANSACTION LOCKOUT DATES

This feature (as shown to the right) allows users to be stopped from posting any further transactions within a defined date range. Reports may be printed and inquiries performed, but no transactions can be further posted as long as this range is in place. Users with “**Administrative**” rights can get around this option as needed. But, this helps managers to “**lock down**” a period (month or year) once it is closed!



Use the calculator throughout all modules and conveniently paste the results into any transaction field!



Module Overview

Continued

FORMS GENERATOR

The **Infinity POWER Forms Generator Tool** is a program which allows the user to create customized forms using the fields available within the accounting programs that require form printing. This program allows for much of the technical design capabilities necessary for sophisticated forms in a format that is easy to use by non-programmers.

Data Pro has successfully integrated these design considerations into an extremely powerful, yet easy to use package, called the **Infinity POWER Forms Generator** module. The **Forms Generator** module allows user definition of all form characteristics including the number of lines, page width, and whether to use normal or condensed printing on a form.

This module utilizes the same consistent **Infinity POWER** interface for ease of use and simple operation. Every existing **Infinity POWER** form is generated by the **Forms Generator** module plus an infinite number of new forms! As you can see, the **Infinity POWER Forms Generator** gives you the power of a systems level programmer in a simple to use non-programmer's package.

INFINITY COMMERCE

Infinity COMMERCE is the core technology of Data Pro's advanced automation solutions. **Infinity COMMERCE** is designed to allow Data Pro's **Infinity POWER** accounting software products to enable their accounting system for integration to a variety of products, including Data Pro's **DP/DashBoard/CRM**, **DP/AUTO Event Triggering System** and **DP/SCAN**. This is included along with the purchase of either of the two (2) variations of the **System Administrator** module.

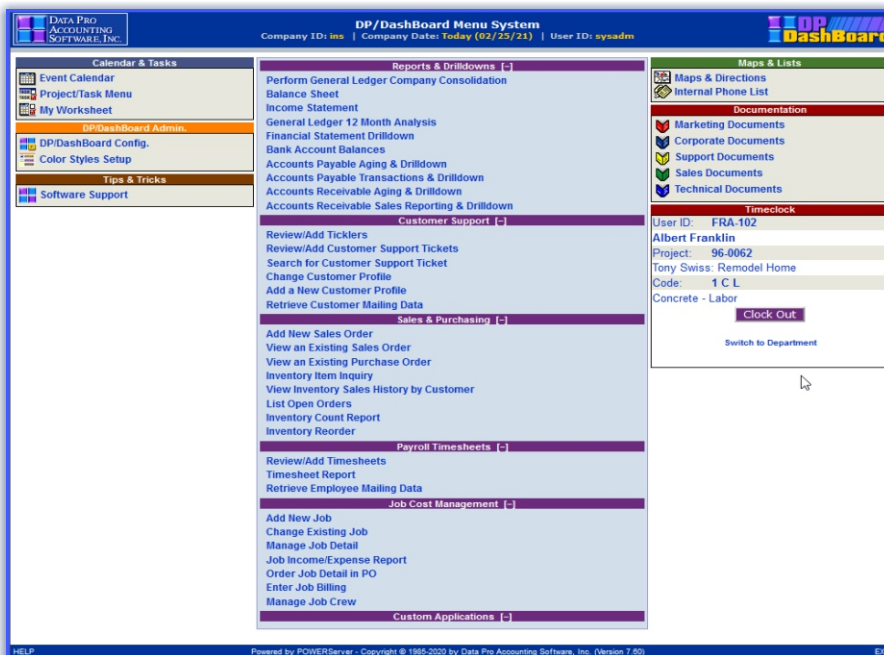
The key components have many uses designed to enable firms to access or update their accounting data files directly from anywhere in the world. This brings about options that most firms do not believe to be possible today. However, **Infinity COMMERCE** has been available since 1996.

Fully secure and private, **Infinity COMMERCE** provides you with the tools necessary to do anything from order processing with secured credit cards to on-line pricing inquiries from your inventory files, on-line order inquiries from the Sales Order system, customer account inquiries, and remote Time Sheet Entry from any PC or tablet device.

The key is that this is real time processing to your accounting system and not a batch update! If you have a need for processing accounting transactions in diverse locations, you must look at the new ways your firm can do business today with **Infinity COMMERCE!**

DP/DashBoard is our Intranet Enterprise Management product. **DP/DashBoard/CRM** can allow order entry through a wide range of "Tablet Devices," such as an **Apple iPad**, a wide range of laptop PCs and other Smartphone devices and **DP/DashBoard/CRM** have been enabled to fully integrate with **Infinity POWER** and allow for very comprehensive processing of data items, such as Inventory Items, Units of Measure, multiple price tables and much more.

The uses for this technology are numerous. A good example is the **DP/AUTO Event Triggering System**, which integrates to all **Infinity POWER** modules. It's automation capabilities are what owners should be looking for to streamline their daily business operations and reporting.



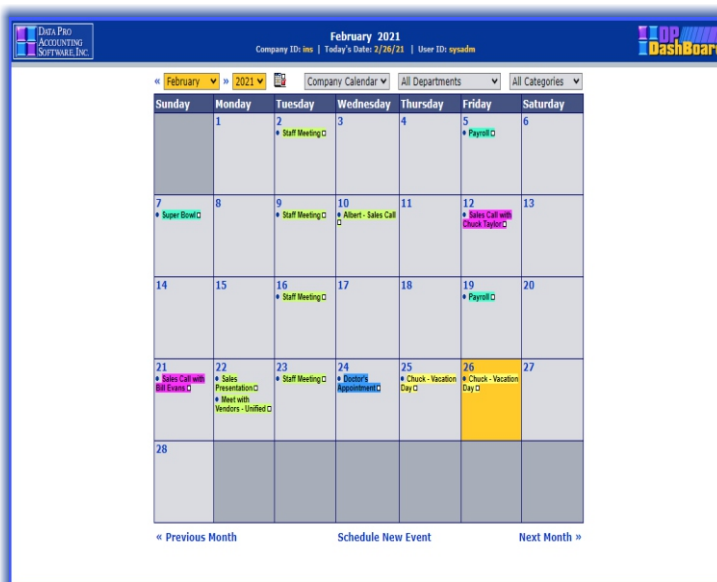
*DP/DashBoard/CRM represents just some of the many possibilities of using **Infinity COMMERCE** technology in your business. Because of its unique technology, advanced features like the **Financial Statement Drilldown** and the **General Ledger 12 Month Analysis** are available here and not through the standard accounting modules.*

Seamless, automated features that can be defined once and left for repetitious processing is the best definition for using **DP/AUTO**. It comes with over 15 unique scripts from as simple as delivering the company's Balance Sheet and Income Statement to management on a fixed schedule to performing complex calculations such as accruing Employee's personal time balances as each Payroll cycle is run, depending on the unique rules each particular company deploys.

The **POWERServer** is the core communication engine that drives Data Pro's advanced automation technologies. It knows specifically how to communicate to each field and data file for all applications within the **Infinity POWER** product line.

However, it is capable of being used for much more. Communicating to third party applications like the **UPS WorldShip & FedEx Ship Manager** software products to pass tracking numbers, Address changes, # of packages, freight charges and more to the **Sales Order Entry** module instantly is a good example of how the **POWERServer** can communicate to other accounting modules in real time.

Any application that can communicate to a **TCP/IP** port is ideal for interfacing with **Infinity POWER** through the **POWERServer**. Secure and yet intelligent enough to allow a great deal of flexibility for data updates and postings!



*Using the latest **Infinity COMMERCE** technology, **DP/DashBoard/CRM** creates an **Intranet** system totally unique in the marketplace that can be used by almost everyone within the company by using a browser on a PC or tablet device!*

MODULE OVERVIEW

Module Overview

Continued

MODULE OVERVIEW

Once orders are shipped in the warehouse, all freight amounts, method of shipping, tracking numbers and more are sent directly to the **Infinity POWER Sales Order Entry** module to automatically prepare each order for final invoicing and tracking. The result is the ability for your customers to find the status of their shipment information on-line (*24 hours a day, 7 days a week*), using their tracking numbers directly from the freight carrier's web site, such as **UPS** and **FedEx**.

One click and the customer can go directly to that firm's web site and see the current shipping status of their orders. Customers have this information since confirmation e-mails can be generated for each shipment of the customer's order.

This removes them from your phone lines that tie up your internal staff and allows them to get information as quickly as possible. No additional personnel involvement is required. This works well not only for firms integrated with the web, but also those firms with high volumes of shipping requirements. **POWERServer** brings this seamless integration together either way.

The **Infinity COMMERCE** product that enables an application to communicate to the **POWERServer** contains a special **COM Object**. The **POWERServer** simply listens on your network for valid commands from an authorized source and automatically performs the requested transaction based on the rules set up within the accounting system.

This creates a unique security level that is unparalleled in the industry. Therefore, your accounting server can be in the same building as your web server or can be thousands of miles away from each other.

Our **Infinity COMMERCE** features have the capability of full access to every accounting data file and record within each file. They can perform inquiries on those data files (*such as looking for a price for a specific inventory item*) or they can create new accounting records on-line (*adding a new customer on the fly*). It can be designed to create transaction updates (*such as adding a new sales order*) or it can record the receipt of inventory items on a purchase order.

ACCOUNTING INTEGRATION & UPDATING

Infinity COMMERCE allows third parties to call the "**Accounting Objects**" which know all of the rules necessary on the back-end accounting side to correctly comply with the accounting requirements.

For instance, when adding a sales order and posting a deposit, this would include all of the processing for updating the **Sales Order** file, the **Sales Order Detail** file, the **Customer** file, **Open Item** file, **AR Transaction Journal**, **Detail** file, **Salesman** file, **Sales Code** file, **Tax Rate** file, **Inventory Item** file, **Cost Layer** file, **Inventory Transaction Detail** file and, of course, the Integration to **General Ledger** files with all of the correct debits and credits.

LET'S FACE IT

Most web designers are not accountants. Therefore, using **Infinity POWER** and the **Accounting Objects** in **Infinity COMMERCE** to automatically update the required files, allows a web designer to concentrate on what they're good at and leave the intricate accounting processes to us.

One of the primary benefits of using any of the **Infinity POWER** advanced accounting modules is that you are only one step away from being able to use the most powerful communications network on earth, the **Internet**.

Accounting is a sensitive issue and security must be the foremost on anyone's mind when dealing with the Internet. Data Pro's **Infinity COMMERCE** products are included with the purchase of any Data Pro accounting system.

Whether you want to sell products using the Internet or allow remote offices to update costs on a Project in the **Job Cost Main Module (Intranet)**, the combination of **Infinity POWER** and **Infinity COMMERCE** can get you there today!

You now have the "**power**" to securely enable your entire accounting system to perform a wide range of functions from anywhere! The revolution is on, are you going to participate?

DP/SCAN

One of the most powerful integrations that **POWERServer** creates is the use of **DP/SCAN** within your office and/or warehouse. This application can be used either on a Windows PC, such as a laptop, or on specific handheld devices, such as the **Motorola** device show at the top right of this page. This type of device obviously provides the maximum in flexibility.

When timeliness counts, having the ability to scan the receipt of inventory directly into the accounting system as soon as it hits the warehouse docks, is paramount!

DP/SCAN communicates in real time to the Inventory module, along with the **Purchase Order Entry** and **Sales Order Entry** modules performing a wide set of functions. This is one more example of how the **Infinity COMMERCE** functions found within the **System Administrator** module bring our "**advanced automation**" tools to you.

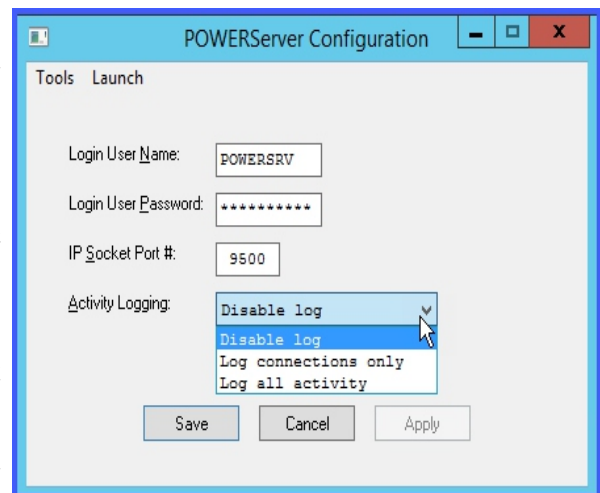
DP/AUTO Event Triggering System

Leading the way in communicating with the **POWERServer**, is our **DP/AUTO Event Trigger System**. This powerful tool is the quiet **Infinity COMMERCE** application that can be used in dozens of ways to provide background scripts that can be everything from simple to quite complex. These scripts can simply run reports at a specific time and e-mail them to an individual or group of people. It can be used to interface your accounting system with a wide range of third party software products and applications.

For instance, if your firm uses a Payroll processing firm like **ADP** or **Paychex**, a **DP/AUTO** script can automatically bring



DP/SCAN is compatible with various devices including **Motorola's MC9200-G** shown above.



POWERServer allows real-time access to your accounting data which allows your staff to process orders from a wide range of devices, including PC's and tablets in the field. They can check pricing from your inventory, check quantities on-hand, and integrate Sales Orders to shippers, like **UPS** and **FedEx**, while processing credit cards securely with just a few clicks. Or, you can tie up your **800** lines and pay a lot of staff to be more inefficient! Your choice!

all of that pay data into the Data Pro accounting system and update the General Ledger as well as any related Job Costing data. Or, it can provide the **EDI** interface from large retailers, like Home Depot and Lowe's, and automatically format thousands of Sales Orders a day into the proper format and post them directly into your accounting system.

Further, **DP/AUTO** never calls in sick and its scripts can continuously be modified as your needs change over time. There are fifteen standard scripts that come with this product to get you started with the basics.

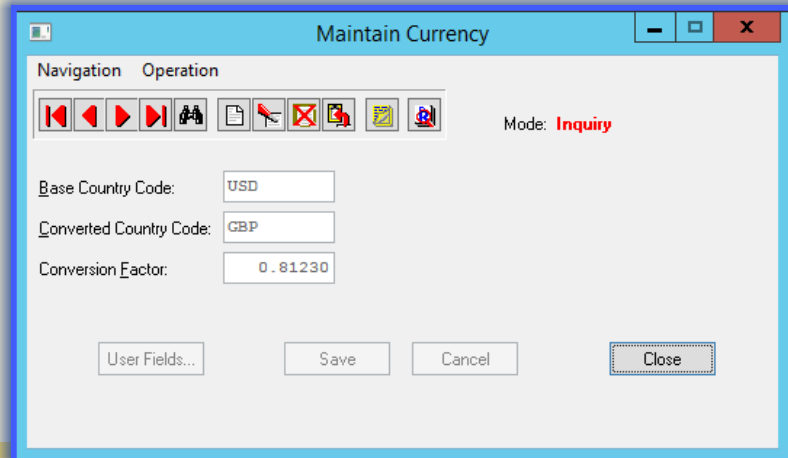
The **Add-On Price List** provides with you a whole host of other available scripts that are available to tie your company into banks, front desk hotel software, **FedEx** and **UPS** and much more! This is what **Infinity COMMERCE** is truly all about.

Module Features

Continued

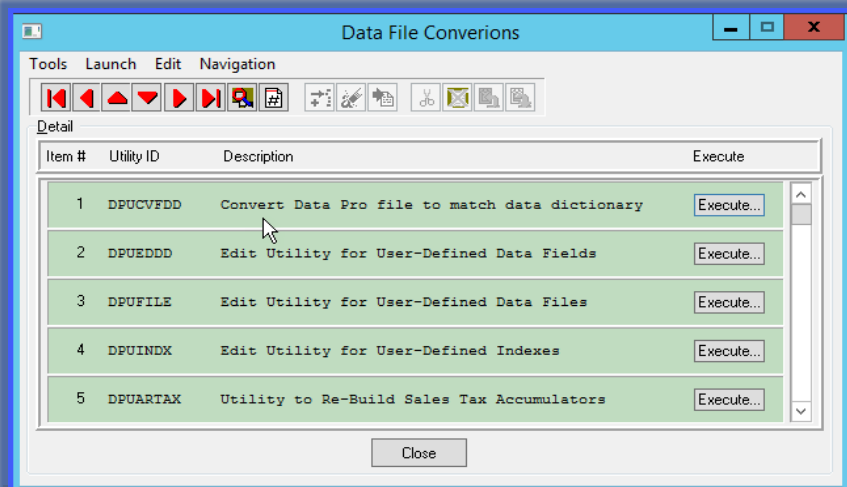
MODULE OVERVIEW

- **User Definable Fields** are available throughout all software modules.
- **User Definable Indexes** are available throughout all software modules.
- **“Notes”** may be added to all Master Records in all accounting modules. When the user is in the **Inquiry, Add, Change, Delete** or **Copy** options, a **“Notes”** feature is accessible (**CTRL N**) which allows **“notes”** to be attached to the selected record. The user may add new and review existing notes.
- **Advanced Security Administrator, Form Generator, Menu Editing Tool** and **POWER Upgrade Utility** are included as a standard feature in the two versions of the **System Administrator** module.
- All Address lines in the Company File include four lines with thirty (30) characters per line.
- Country files are available with up to four (4) characters for currency symbol.
- Currency conversion file allows importing of factors.
- Allows Font Control in Windows-based Output Options.
- Configured to allow four (4) digit year display (i.e. 2023).
- **“ENTER”** key can be used in addition to the **“TAB”** key in the **Windows GUI** version.
- **Insert** and **Overwrite** modes are available throughout the **Windows** interface.
- Screen Display for reports with increased flexibility using **VCR** buttons to move within the report along with ability to size to screen.
- **Crystal Report** templates are included for many standard accounting reports. This is ideal for further report customization.
- Browser-based **“Help”** manuals are included for all software products.
- **System Administrator** includes all web-capable modules with sample templates.
- All modules feature an Open Architecture Database Engine (*FoxPro Compatible*) across all operating systems including **Windows 10** and **Windows 8, Windows Server 2016/2012/2008** and **Microsoft SQL Servers**.
- All data files are **“Binary File Compatible”** across all supported operating system platforms.
- **Client/Server** connectivity is available for **Windows GUI** and **SQL** versions of the **Infinity POWER** products.
- **DPERR.LOG** keeps history of all errors that are encountered while running the **Infinity POWER** products for advanced support.
- The **“Transfer Integration Files”** option automates transfer of files to and from local USB drives and/or CD-ROMs.
- The **“Data Pro File Utility”** allows the user to define external data files. The accounting applications will not be able to access these **“user”** files, however, the **Report Writer, Report Writer Run Time** and the **POWER Server** modules have access to them.
- The utility to define user-definable fields can be used to define the fields for these user files.
- Another **“Data Pro File Utility”** allows for the definition of **“User Defined Indexes”** that can also include **“User Defined Files.”**
- Data files can be tracked with unique data file paths on a module-by-module basis for advanced security.
- The **Windows** version supports **Microsoft Exchange Server for E-mail**.
- The E-mail configuration allows a setup required by some **ISP** providers which includes the **SMTP username** and **password** and an override of the default **SMTP port number** and whether **SSL mode** is required.
- **Windows** version of **Infinity POWER** supports all Windows installed printer devices including **FAX** programs such as E-Fax and Microsoft Fax.
- Pop Up Calendar (**F10**) on all date fields allows month at a time viewing and selection.
- All modules allow the override of the current **FORM** in use at time of printing of forms (e.g., **Checks, Invoices, Sales Orders, Statements**).
- The **F10** key on all inquiry screens allows for a selection window for inquiry information (e.g., **Aging Summary in Customer Inquiry**).



This option allows companies to store multiple currency conversion factors for issuing Purchase Orders in the vendor's native currency while still processing in your native currency (i.e. - processing in U.S. dollars while issuing PO's to vendors in England in British Pounds).

- The **“Internationalization”** features include the ability to define date formats, currency symbols, formatting for country code addresses and comma/period placement.
- A Scroll Search feature is available when using the option to Create or Change a Company to view the currently available companies.
- Supports a message in all modules when creating New Year's Files which tells the end user what fiscal year's files will be created.
- Includes the ability to have **different backgrounds “by Company”** to differentiate which Company the end user has selected and is actively working on.
- Allows for a Data Dictionary specification, which specifies on a **“field level”** that the data will be encrypted in the database. The data will automatically be encrypted and unencrypted as it is stored and retrieved from the database. This allows for the feature like the addition of credit card information fields to the Accounts Receivable database file.
- Dynamic Link Library (**DLL**) technology is implemented in all products on all platforms.
- The Master Configuration provides a configuration option which allows the restriction of **“Company Changes.”** For those users which process in the software where there are multiple sets of books being kept for multiple businesses, not every user in the software may be entitled to have access to all companies. When this option is turned on, the **Advanced Security Administrator** will allow the flexibility to control user rights on a company by company basis.
- Each user can also define in the Master Configuration whether to include the **“Current Date/Time On Reports”** as they are being printed. This feature may not want to be included in final reports that are provided to upper management, ownership or banks, but when performing entries on a daily basis, it helps significantly to keep track of the latest report.



This option provides access to many global data file related utilities that provide users with capabilities such as adding user-defined fields and indexes by accounting module.

Module Features

Continued

- ♦ All Data Files include a Date/Time Stamp.
- ♦ Includes on-line “web-based” activation of new registration files during installation to ease the customer installation process.

FEATURES OF INCLUDED PRODUCTS

ADVANCED SECURITY ADMINISTRATOR

- ♦ Controls user access to the DP/DashBoard/CRM program features.
- ♦ Includes both **Standard** and **Advanced Level** security modes.
- ♦ Required to implement **POWERServer** with **Infinity COMMERCE** for all web site implementations.
- ♦ Supports advanced Password and Access Control capabilities for all **Infinity POWER** versions of the products.
- ♦ Ten (10) character User and Group ID Numbers (*alpha/numeric*).
- ♦ Monitor and control access to highly sensitive accounting and database information.
- ♦ Access may be provided to an individual User or a Group of Users to the complete accounting module or just specific options within a single accounting module.
- ♦ Control may be granted at several levels.
- ♦ System tracking of password change date and times.
- ♦ Features a “**Force Password Change**” option which requires all users to change their password on the next login for security purposes.
- ♦ Provides Option Control requirements for User Logins or not.
- ♦ Custom Security Objects may be added, if desired.
- ♦ Advanced “**Activity Logging**” is maintained for System Administrator.
- ♦ Wide Range of Security Reports for System Administrator.

POWER UPGRADE UTILITY

- ♦ **Converts all versions of Infinity POWER** to the most current version.
- ♦ One step Upgrade to the most current version.
- ♦ Converts up to **15 years** of data in one step, per company.
- ♦ Only converts files that have been restructured.

MENU EDITING TOOL

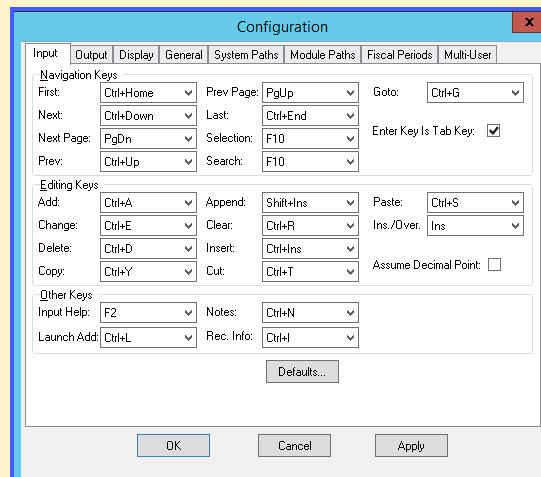
- ♦ Customized menu Option ID's restrict access to certain employees.
- ♦ Simplify the menu to include only those options that your company needs.
- ♦ Change the terminology of the options to suit your needs.
- ♦ Create menus combining options from several different modules.
- ♦ Incorporate and invoke macros into an option.
- ♦ Access other programs and/or options automatically from the menu (*e.g. other Infinity POWER programs, third party spreadsheets, database managers or word processors, etc.*)
- ♦ Invoke custom programs from menus.

FORMS GENERATOR

- ♦ Create customized forms using fields available within the accounting programs that require form printing.
- ♦ User defined characteristics including number of lines, page width and normal or condensed printing.
- ♦ Predefined libraries containing field definitions for all modules that use form printing.
- ♦ Use of other non-defined data fields found in **Infinity POWER** databases.
- ♦ Use of user defined fields.
- ♦ Text only lines.
- ♦ Create custom Payroll check forms.
- ♦ Create custom Accounts Payable check forms.
- ♦ Create custom Accounts Receivable invoice forms.
- ♦ Create custom Purchase Order forms.
- ♦ Create custom Sales Order forms.
- ♦ Create custom Packing List forms.
- ♦ Create custom Bill of Lading forms.
- ♦ Create custom Point of Sale receipt forms Ability to pre-align forms.
- ♦ Ability to print Maintenance Reports.

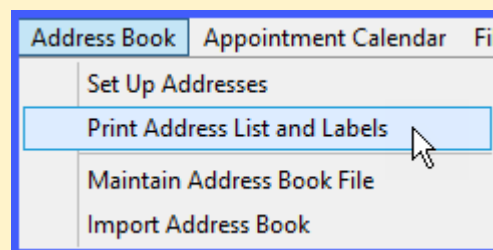
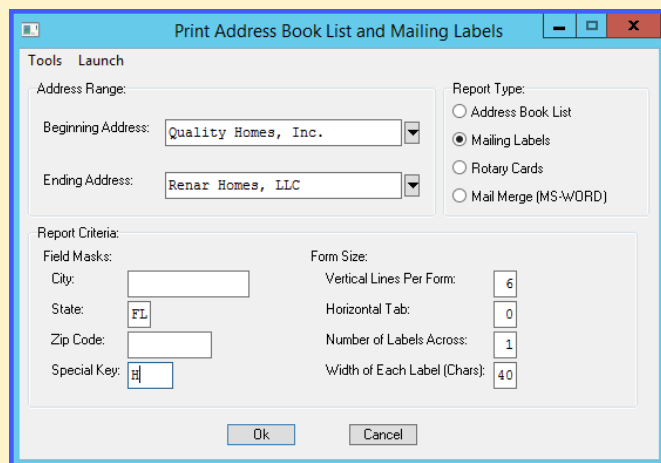
INFINITY COMMERCE

- ♦ **POWERServer** module, which is the service module that provides the direct communication link for add-on products, such as Data Pro's **DP/DashBoard/CRM, DP/AUTO** and **DP/SCAN**.
- ♦ This is the core technology of Data Pro's advanced automation technology.



Each user's individual configuration can be defined to provide a specific set of permissions, with custom Navigation Keys, Editing Keys and more.

- ♦ Dynamic and Configurable E-Mail Notifications.
- ♦ Full Color Graphics.
- ♦ Direct Integration to all Accounting files.
- ♦ Grant or restrict access to any piece of data in the system.
- ♦ Real-time transaction posting to the Accounting System.
- ♦ Multithreaded ability of the **POWERServer** supports multiple connections to accounting database.
- ♦ Allows posting of Serial Numbers to the Detail lines of the sales orders.

Store, print and merge a private or company address book for miscellaneous database usage. Print mailing labels or use for Mail Merge letters in Word.